

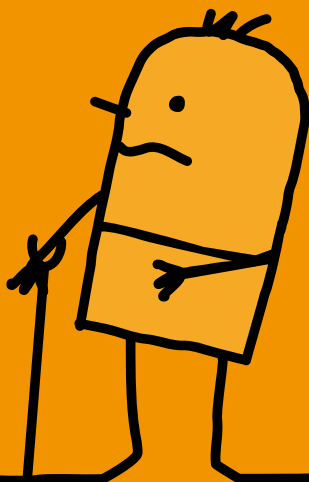
Benefit Changes

ARE YOU PREPARED?

7. Disability Living Allowance



The Government is making big changes to welfare benefits. **Find out how the changes affect you.**



Disability Living Allowance is changing to Personal Independence Payment

Personal Independence Payment (PIP) is a new benefit to help disabled people live full, active and independent lives. Disabled people aged 16 - 64 who are entitled to the benefit will get money to help them pay the extra costs of being disabled.

Some things will stay the same.

- People must have a long-term disability or health condition to get Personal Independence Payment.
- Personal Independence Payment is money that people can spend in any way they choose.

Question

How will Personal Independence Payment be calculated?

Answer

- There will be a Daily Living part and a Mobility part. Your money will be made up of one or both of these parts.
- Each part will be made up of 2 rates – standard and enhanced. The Government has not yet decided how much these rates will be.

Question

When will the changes happen?

Answer

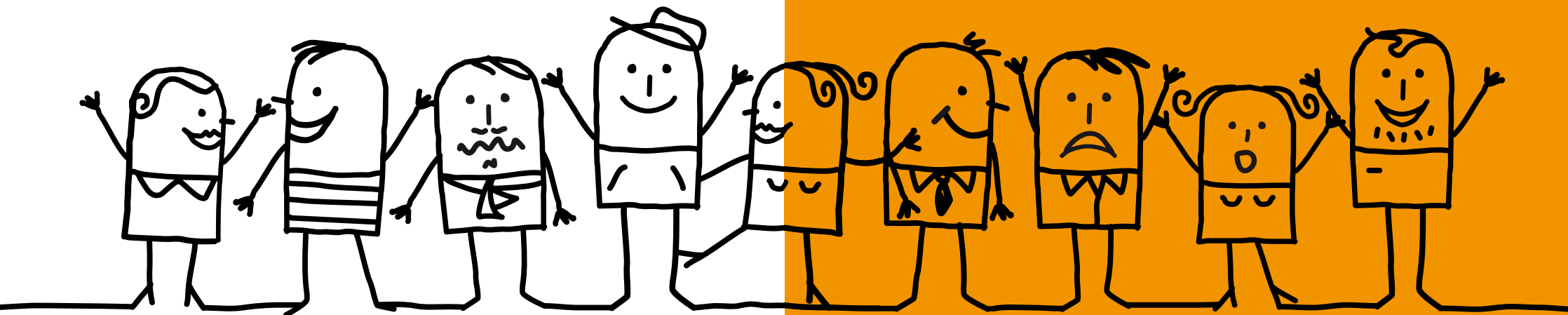
- The Government have decided to change Disability Living Allowance to Personal Independence Payment from April 2013.
- Personal Independence Payment will be introduced to the country in stages.
- The Government will ask everyone to make new claims for Personal Independence Payment by March 2016.

Question

Is everyone entitled to the Personal Independence Payment?

Answer

No. Everyone will have to make a new claim when asked to (unless they are terminally ill).



Who can I talk to about the benefit changes?

DWP Helpline:..... **0845 6057 064**

Citizens Advice Bureau:..... **0844 4111 444**
(landline)

0300 3300 650
(mobile)

Housing and Council Tax Benefit:..... **01709 336065**

